



**2012 IASF WORLD AIRLINE SKI CHAMPIONSHIPS**  
TOUR BROCHURE INCLUDING PRE-WEEK INFORMATION

# WASC 2012 NISEKO JAPAN

**Niseko Village and Grand Hirafu Resorts welcome  
IASF members to come to Niseko in Hokkaido Japan  
for the 53rd World Airline Ski Championships**

**WASC Week: Mar 4-9, 2012  
Pre-Week: Feb 23-Mar 4, 2012**



**HALTI**

# Niseko

Niseko offers unparalleled snow and ski conditions, friendly Japanese culture and stunning natural surroundings for what will be an unforgettable World Airline Ski Championships event

## The Niseko Resort

Niseko United consists of four closely interlinked ski areas around Mt Annapuri: Niseko Village, Niseko Annapuri, Niseko Grand Hirafu and Hanazono. The Niseko United All Mountain pass allows guests to take advantage of the unique facilities of all areas including night skiing in Hirafu and Niseko Village. Niseko Hirafu is the main village and offers a huge variety of restaurants, bars, clubs and shops that will appeal to all tastes and budgets and is a 15 minute free shuttle bus ride from the Hilton Niseko Village.



## Niseko's world class powder skiing

Over 1,000 ha of back-country terrain welcomes those looking for bottomless turns in champagne powder.

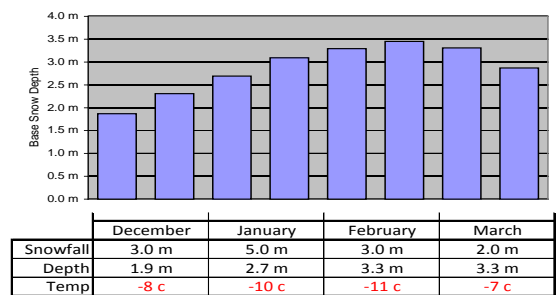
Unlike many other resorts, on a powder day it is easy to find great untracked powder, run after run in Niseko. There are several very high quality off-piste areas which are readily accessible from the lift system and those who are willing to take a 20 minute hike to the top of Mt Annapuri will be rewarded with a massive back-country area – most of which has return runs to the Hanazono or Annapuri lift system. Special back-country tours will be organised as part of the WASC event week with qualified mountain guides.

## Niseko Statistics

"Niseko United" (included in all mountain pass)	Niseko Hirafu Niseko Hanazono Niseko Village Niseko Annapuri
Resorts in Area	Niseko Moiva Niseko Weiss
Mt Annapuri Mountain Statistics	Peak 1,309m Base 300m Vertical 1,009m
Season	December – April
Annual Snowfall	14 m (45 ft) (average annual)
Piste Information	61 runs / 48 km of groomed piste
Longest run	5.6 km
Terrain	Beginner 30% Intermediate 40% Expert 30%
Snowboarding	4 terrain parks, 1 half pipe
Off Piste	1,000 ha
Lifts	3 Gondolas 27 Chair lifts
Facilities	17 Mountain restaurants
Hours of operation	All mountain: 8.30am – 4.30pm Night skiing: 4.30pm – 8.30pm

Although it is a major international resort, Niseko is still relatively undiscovered by international standards. This translates into short lift lines (or often, no lift lines) and uncrowded pistes.

## Niseko Average Snowfall Statistics



Niseko boasts an average annual snowfall of over 14m (45') of some of the lightest, driest champagne powder to be found anywhere in the world. Even better, this powder is readily accessible off a world-class lift system which includes three high speed gondolas with a brand-new 6 person high-speed gondola in Niseko Hirafu.

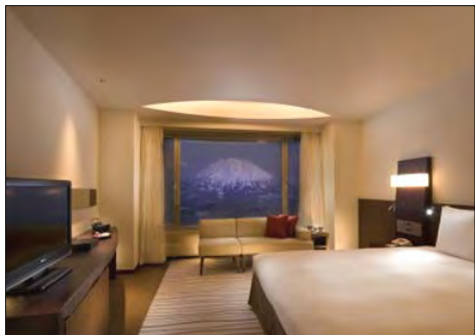
# Hilton Niseko Village



Five star ski-in, ski-out accommodation

Your accommodation for the 2012 WASC will be the recently renovated Hilton Niseko Village

This world-class facility will allow up to 800 WASC participants to be located in the same hotel for the duration of the event. The hotel offers true five star facilities including true ski-in ski-out with the gondola literally at the front-door, free ski valet, outdoor Onsen (see below) overlooking Mount Yotei, fitness centre, luxury day spa offering sports, relaxation and beauty treatments, a cozy fireside lobby bar, choice of restaurants and late night pub.



Hilton Deluxe Room

## Hilton Niseko Village Guest Room Facilities and Amenities

- |                    |                       |                     |
|--------------------|-----------------------|---------------------|
| ▪ 32 inch LCD TV   | ▪ Iron/ironing board* | ▪ Refrigerator      |
| ▪ Internet access  | ▪ Bathrobe*           | ▪ Yukata & slippers |
| ▪ English cable TV | ▪ Safe deposit box    | ▪ Alarm clock       |
| ▪ Telephone        | ▪ Hair drier          | ▪ Air conditioning  |

\* Standard for deluxe rooms only, other rooms upon request

## Excursions

Culture or excitement? Both options will be available to WASC participants that wish to take time out from the event to experience everything that Niseko has to offer.

- |                                   |                               |
|-----------------------------------|-------------------------------|
| ▪ Fishing village day trip        | ▪ Back-country powder guides  |
| ▪ Sake brewery tour and tasting   | ▪ First tracks cat skiing     |
| ▪ Natural hot springs visit       | ▪ Horseback riding            |
| ▪ Japanese cultural heritage tour | ▪ Snowmobile powder adventure |
| ▪ Day spa treatments              | ▪ Local pub crawl             |



Melt Bar and Grill

**Yotei-san** is the extinct volcano that overlooks the whole Niseko resort and acts as a majestic backdrop for your ski holiday.



Ezo apres-ski Bar and Karaoke Club



Gondola just outside Hilton lobby

**Onsen** is the traditional Japanese hot (47-50c) natural mineral spring bath for soaking away sore muscles after a long day on the slopes. The Niseko Village Hilton offers guests an upper level indoor bath combining deep relaxation with panoramic views of Mt Yotei, or experience nature at its best in the stunning large outdoor pool. The Onsen are available free to all WASC participants and are open 24 hours a day.

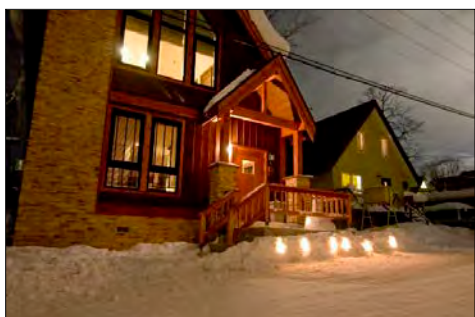
# Niseko Pre-Week



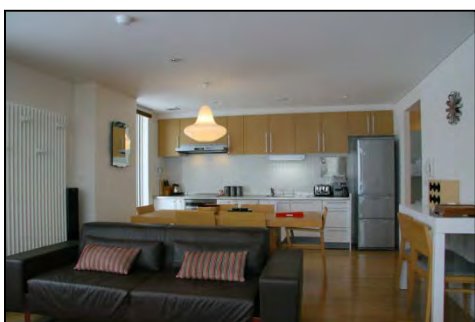
Shinjuku Lights, Tokyo



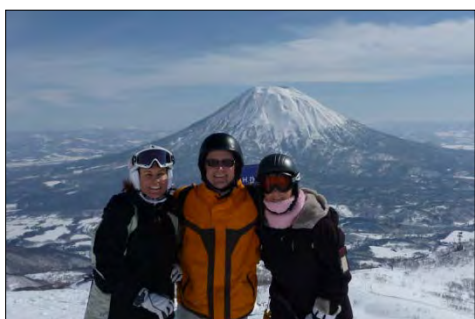
Sapporo Bier Hall (all you can eat and drink party!)



Luxury Ski House Accommodation Option (example only)



Self-catering Condominium Option (example only)



Good times in Niseko

Why not extend your Niseko holiday with an optional organised pre-week in Niseko Hirafu?

**HOKKAIDO TRACKS** *Holidays*  
experience exceptional



For the first time ever, a pre-week is being organised for WASC participants & friends. Whether you choose to use the week for serious training or for serious partying is up to you!

Hokkaido Tracks is the organiser of the WASC pre-week and will make all bookings and arrangements for those interested.

Thu 23 Feb & Fri 24 Feb	Optional: 2 nights at the Hilton Shinjuku Party in Tokyo! Tour the city on your own or get together with old WASC friends for a party in Tokyo.
Sat 25 Feb	Arrive in Sapporo (own arrangements) transfer to Hotel in Sapporo (4* hotel to be confirmed, included). Party at the Old Sapporo Bier Hall Sat Night (included).
Sun 26 Feb	Transfer via coach to Niseko Hirafu (included). Check in at accommodation. Welcome party at Hirafu Welcome Centre.
Mon 27 Feb - Thu 1 Mar	Enjoy your ski & party week in Hirafu. Daily on-mountain events and apre-ski parties. Discounts organised at many Hirafu restaurants and bars. Back-country mountain guiding tours and heaps of other activities will be organised. Day trip to Niseko Moiwā.
Fri 2 Mar	Day trip to Rusutsu. Only 40 minutes by coach (included), Rusutsu offers some amazing terrain and off-piste powder. Return for party in Hirafu.
Sat 3 Mar	Huge end of pre-week party at secret Hirafu spot.
Sun 4 Mar	Why miss a day of skiing? Your luggage and gear will be transferred to Hilton Niseko Village while you ski for the day. Ski down to Hilton anytime after noon for check-in and start of the WASC.

## Pre-Week Accommodation Options

There are several accommodation options available for teams or individuals interested in booking the pre-week ranging from self-catering condominium units of 2-3 bedrooms to fully self-contained resort houses consisting of 3-5 bedrooms. All accommodation options are available at special discounted rates for WASC participants. See the web site for more details and to book. Short-stay options are also available if you can't make the full pre-week. Contact Hokkaido Tracks with your requirements.

## Transfers

Transfers from Sapporo to your accommodation in Hirafu as well as transfers on to the Hilton in Niseko Village are included in the pre-week package for a seamless two-resort holiday.

## TO BOOK PRE-WEEK

Contact Hokkaido Tracks WASC pre-week coordinator at:  
[wascpreweek@htholidays.com](mailto:wascpreweek@htholidays.com)

MORE INFO: [www.wasc-japan2012.com](http://www.wasc-japan2012.com)

# 2012

will be an unforgettable WASC event in Niseko Japan – don't miss it!



## WASC Event Costs

Registration Fees and Room Rates to be paid with your booking with the Hilton Niseko Village. Lift tickets and transport to the event to be paid locally.

Registration Fee (per person)	¥ 20,000
Bed and Breakfast Cost Per Night	
▪ Single room (one person)	¥ 14,000
▪ Standard room (twin share) <sup>^</sup>	¥ 10,000
▪ Deluxe room (twin share)	¥ 15,000
Lift pass*	
▪ 1 day	¥ 5,900
▪ 3 day	¥ 15,000
▪ 4 day	¥ 24,500
▪ 9 days out of 11	¥ 42,300
Transport by Scheduled Coach	
▪ CTS to Niseko Return Ticket	¥ 3,850

<sup>^</sup> Standard rooms also contain a sofa bed which can accommodate a third person for an additional ¥ 5,000 per night.

\* Note, 2011 prices shown, subject to change. Lift passes paid locally. For all lift pass options see Niseko United Web Site: <http://www.niseko.ne.jp/en/lift/index.html>.

## Early Bird Discount

Bookings with deposits made before December 31, 2011 will be eligible to receive a 10% discount on the above room rates.

Example Cost Per Person Registration + 5 nights Accommodation	Normal Rate	Early Bird Rate
Standard Room* ¥ JPY (\$USD <sup>^</sup> )	¥70,000 (\$909)	¥63,000 (\$818)
Deluxe Room* ¥ JPY (\$USD <sup>^</sup> )	¥95,000 (\$1,234)	¥85,500 (\$1,110)

\* Double occupancy, cost per person.

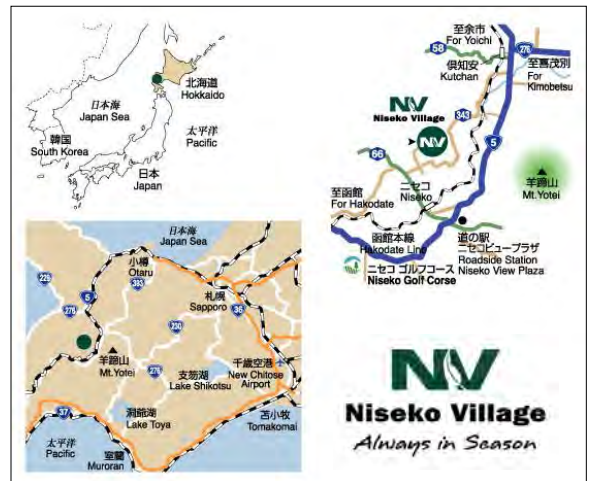
<sup>^</sup> USD figures shown for illustration purposes only at exchange rate of 77 JPY per USD. Payments must be made in JPY.



## Getting to Niseko

Niseko is located in the Northern island of Hokkaido, a 2.5 hour bus ride from New Chitose Sapporo Airport (CTS). Tokyo-Sapporo is the world's single busiest route and CTS has 54 inbound flights daily from Tokyo as well as direct flights from HKK, PVG, TPE, GUM and ICN serviced by Cathay, JAL, ANA, China Eastern, Korean and Continental.

Hourly public coach transfers run between 9am-3.30pm and tickets may be bought on arrival to CTS. A WASC welcome desk will be available on Sunday 4th to assist all incoming WASC participants.



## Niseko in 2012

- ✓ Great snow and world famous powder
- ✓ Single location for all participants
- ✓ Friendly Japanese culture
- ✓ Five star Hilton accommodation
- ✓ Pre-week to extend your holiday
- ✓ True Ski-in ski-out resort

## WASC Event Schedule

The following is the typical schedule of the WASC week and is indicative only. **Please see the IASF web site and WASC 2012 web site for the official event schedule:**

[www.ski-iasf.org](http://www.ski-iasf.org)

[www.wasc-japan2012.com](http://www.wasc-japan2012.com)

Sun 4 Mar	Arrive at Sapporo New Chitose Airport (CTS) transfer to Hilton Niseko Village by scheduled coach.
Mon 5 Mar – Thu 8 Mar	Ski racing and awards ceremonies Theme party Fun races Gala dinner
Fri 9 Mar	Departures

# WASC Booking Instructions

## IASF Team Captains:

A dedicated team coordinator has been set up for both the Hilton (for WASC week) and Hokkaido Tracks (for pre-week) to handle all liaison with team captains/trip coordinators. These two people are available to assist you with all of your booking enquiries.

### WASC WEEK (HILTON)

[wasc2012@hilton.com](mailto:wasc2012@hilton.com)

### PRE-WEEK (HOKKAIDO TRACKS)

[wascpreweek@htholidays.com](mailto:wascpreweek@htholidays.com)

## Early Bird Discounts

A 10% early bird discount is available on the WASC week (not pre-week) for bookings made with deposits by December 31, 2011.

## Booking Terms and Conditions:

- All team bookings to be made by team captain or delegate direct with Hilton Niseko Village.
- All team bookings can be made on a “no name” provisional basis by teams to allow a certain quantity of rooms to be booked prior to knowing final numbers.
- 30% deposit confirms room bookings, no guarantee of room bookings will be made without deposit.
- Final payment and room/name allocations due by Friday February 10th.

## Cancellation policy:

Date cancellation received:	By February 10	By February 29	By March 3	After March 3
Penalty Free Booking Cancellation Threshold:	Cancel up to 15% of group booking	Cancel up to 10% of group booking	Cancel up to 5% of group booking	Any cancellation or no show
Penalty for Exceeding Cancellation Threshold :	Penalty of 1 room night per room over 15% cancelled	Penalty of 1 room night per room over 10% cancelled	Penalty of 2 room nights per room over 5% cancelled	Full payment

## TO BOOK

### WASC WEEK:

Get your team trip captain/coordinator to reserve rooms with the Niseko Hilton or e-mail the WASC 2012 Niseko coordinator at: [wasc2012@hilton.com](mailto:wasc2012@hilton.com)

### PRE-WEEK:

Contact Hokkaido Tracks WASC pre-week coordinator at: [wascpreweek@htholidays.com](mailto:wascpreweek@htholidays.com)

### MORE INFO:

Go to [www.wasc-japan2012.com](http://www.wasc-japan2012.com) for more information, pictures and video



**HALTI**

# A note on your safety

*On Friday March 11, 2011, the whole world watched with sadness and horror at the devastation wreaked on the Japanese people from the earthquake and tsunami that followed it.*

**Apart from a small number of exceptions in Tohoku, the infrastructure and facilities at the vast majority of ski resorts in Japan were totally unaffected by the earthquake and none were affected by the tsunami. The 2011/12 Japanese ski season will be 'business as usual'.**

It is understandable that people might think that it is best to avoid a region that has just been hit by a large-scale natural disaster, but it is important to note the location of the earthquake and the Fukushima nuclear plant. Niseko is over 500 km from the epicentre of the earthquake and 600 km from the plant, so it dealt with almost no direct impacts from the event. Despite concerns about food and power shortages in affected areas, Niseko neither expected nor experienced supply issues.

Perhaps it is the Fukushima nuclear plant incident that is the main area of concern for people considering visiting Japan. Everyone will of course have to make their own decisions on that issue, but as long as the areas surrounding the plant itself are avoided it is safe to say that there should be no real cause for concern.

## Radiation concerns

To try and put things into perspective, the JNTO (Japan National Tourism Organization) has published the official readings from cities across the world in the table shown below (Niseko figure from Niseko Promotions Board). Even without a scientific understanding of the numbers involved, it clearly shows the environmental radiation levels in Tokyo to be comparable or lower than other major cities. At present, there is a 20km exclusion zone around the Fukushima plant which residents are starting to be allowed to enter for short periods of time.

## Food concerns

From the time of the disaster, the Hilton Niseko Village has taken proactive steps to ensure the safety of its guests including scanning every item of incoming goods (food and otherwise) for radiation (none found) and sourcing all meat from Australia and New Zealand. Fish served at the Hilton is sourced from the North West of Hokkaido which has not suffered any pollution from radiation leaks.

For those interested in being part of such things, visiting Japan would also be one way to help support the country as it gets back on it's collective feet. Japan certainly does not want people to desert her at this time and will welcome visitors with open arms.

## For more information

<http://www.wasc-japan2012.com/>

<http://www.snowjapan.com/e/japan-tohoku-earthquake/index.html>

[http://www.jnto.go.jp/eg/eng/04\\_recovery.htm](http://www.jnto.go.jp/eg/eng/04_recovery.htm)

[http://en.wikipedia.org/wiki/2011\\_T%C5%8Dhoku\\_earthquake\\_and\\_tsunami](http://en.wikipedia.org/wiki/2011_T%C5%8Dhoku_earthquake_and_tsunami)



City	Dose of Radiation (uSv/h)	Date of measurement
Tokyo	0.060	June 13th 2011
Niseko (Kutchan)	0.040	June 13th 2011
New York	0.094	May 31st 2011
Paris	0.04-0.09	June 10th 2011
Berlin	0.069-0.087	June 13th 2011
Singapore	0.09	June 13th 2011
Hong Kong	0.07-0.13	June 13th 2011
Beijing	0.064	June 13th 2011
Taipei	0.061	June 13th 2011
Seoul	0.108	June 13th 2011